



# Microwave antenna UNI1-38

## Antenna description

High Performance  $\varnothing$  0.35 m antenna for ALCOMA point to point radiorelay links with standard holder or AFM holder for precise alignment.

## General parameters

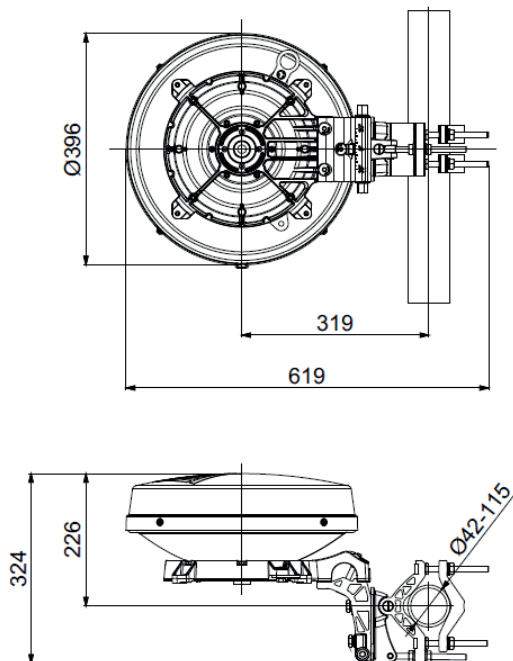
Diameter	0.35 m (1 ft.)
Feeder	single polarized (dual polarized)
Polarization	horizontal / vertical (dual)
Input flange: - standard - optional	circular, hole diameter 5.50 mm R320 (WR28)
Environmental temperature	-35 °C to +55 °C
Color	light grey
Radom material	white plastic (ABS + PMMA)



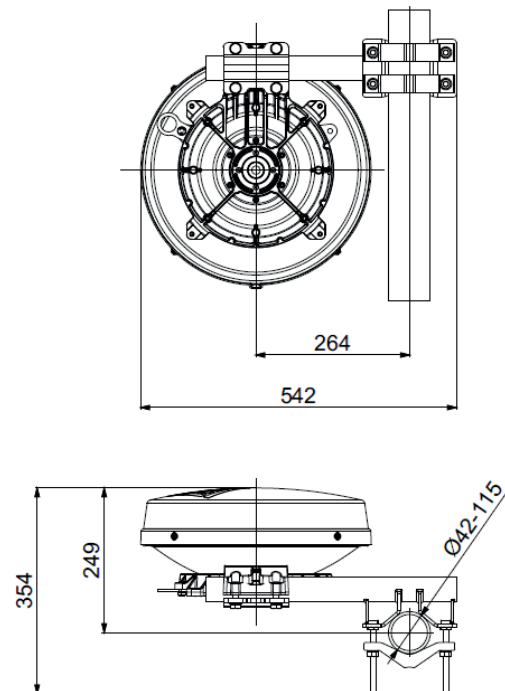
## Electrical parameters

Frequency band	37.000 - 39.500 GHz
Gain: - low band	39.7 dBi
- mid band	39.9 dBi
- high band	40.2 dBi
Beamwidth (-3 dB)	1.4° (H / V)
Return loss	< 1.30 (17.7 dB)
Front to Back Ratio	57 dB
Cross Polarization Discrimination	33 dB
Antenna class	2 (ETSI EN 302 217-4-2)

### UNI1-38-AF



### UNI1-38-AS



# ALCOMA



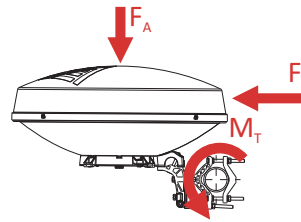
# Microwave antenna UNI1-38

## Mechanical parameters due to wind UNI1-38-AF

## UNI1-38-AS

Performance stability	max 30 m/s (110 km/h)	max 30 m/s (110 km/h)
Survival	max 55 m/s (200 km/h)	max 55 m/s (200 km/h)
Radial ice load (density 7kN/m <sup>3</sup> )	25 mm	25 mm
Net weight	6.8 kg	6.9 kg
Pipe diameter*	42 - 115 mm	42 - 115 mm
Adjust azimuth / elevation		±180° / ±20°
Fine adjust azimuth	±15°	—
Fine adjust elevation	±30°	—

## Force and twisting moment due to wind



Wind velocity	30 m/s	55 m/s	30 m/s	55 m/s
<b>F<sub>A</sub></b> - axial force	100 N	325 N	100 N	325 N
<b>F<sub>S</sub></b> - side force	35 N	105 N	35 N	105 N
<b>M<sub>T</sub></b> - twisting moment	35 Nm	105 Nm	30 Nm	90 Nm
Icing thickness 25 mm	18 kg			

\* diameter 42 - 48 mm can be used when the wind speed does not exceed 50 m/s (180 km/h)